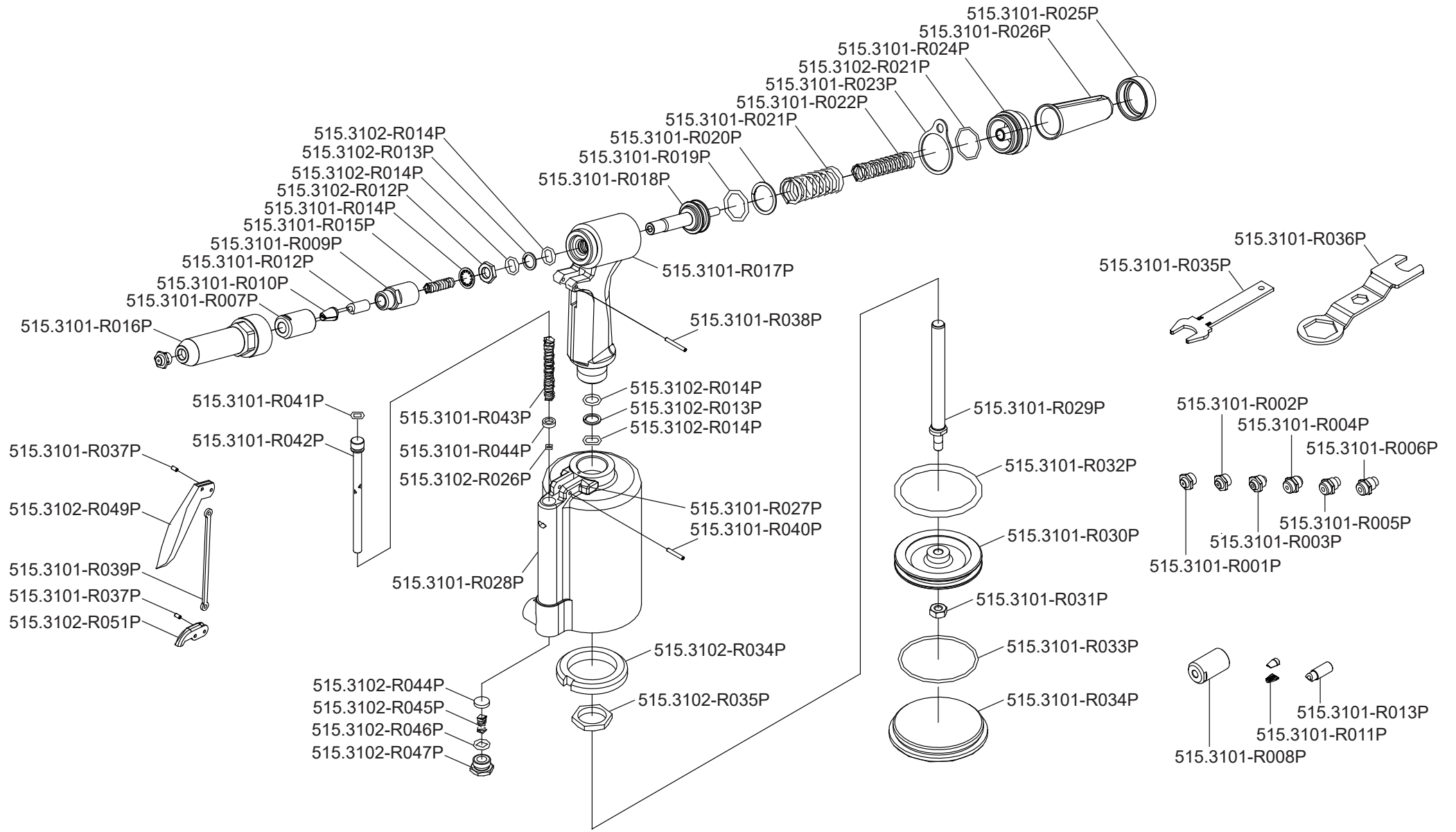


Art. 515.3101



Art. 515.3101

Art.-Nr.	Description	Beschreibung	Menge Qty.
515.3101-R001P	Nosepiece 3/32" 2,4mm	Mundstück 2,4mm	1
515.3101-R002P	Nosepiece 1/8" 3,2mm	Mundstück 3,2mm	1
515.3101-R003P	Nosepiece 5/32" 4mm	Mundstück 4mm	1
515.3101-R004P	Nosepiece 3/16" 4,8mm	Mundstück 4,8mm	1
515.3101-R005P	Nosepiece 7/32" 5,6mm	Mundstück 5,6mm	1
515.3101-R006P	Nosepiece 1/4" 6,4mm	Mundstück 6,4mm	1
515.3101-R007P	Jaw case, front	Vorderes Backengehäuse	1
515.3101-R008P	Jaw case, front for 2,4mm , 3/32"	Wechsel Backengehäuse für 2,4mm , 3/32"	1
515.3101-R009P	Jaw case, rear	Hinteres Backengehäuse	1
515.3101-R010P	Jaw (2pcs.)	Klemmbacken 2 Stk.	1
515.3101-R011P	Jaw (2pcs.) for 2,4mm , 3/32"	Klemmbacken 2 Stk. für 2,4mm, 3/32"	1
515.3101-R012P	Jaw pusher	Vordere Führungshülse	1
515.3101-R013P	Jaw pusher for 2,4mm, 3/32"	Hintere Führungshülse	1
515.3101-R014P	Case washer ring	Gehäuse Dichtungsring	1
515.3101-R015P	Spring, jaw pusher	Feder für die Führungshülse	1
515.3101-R016P	Frame head	Gehäuse Front	1
515.3102-R012P	Lock nut	Sicherungsmutter	1
515.3102-R013P	O-ring	Sicherungsring	1
515.3102-R014P	Backup ring	O-Ring	1
515.3101-R017P	Frame	Gehäuse	1
515.3101-R018P	Piston Assy	Kolben	1
515.3101-R019P	O-ring	O-Ring	1
515.3101-R020P	Backup ring	Sicherungsring	1
515.3101-R021P	Spring	Feder	1
515.3101-R022P	Spring	Feder	1
515.3101-R023P	Hanging clip	Aufhängöse	1
515.3102-R021P	O-Ring	O-Ring	1

Art.-Nr.	Description	Beschreibung	Menge Qty.
515.3101-R024P	Frame cap	Rahmenabdeckung	1
515.3101-R025P	Nut, frame cap	Mutter für Kopfstück	1
515.3101-R026P	Safety cap	Sicherheitsabdeckung	1
515.3101-R027P	Spring pin	Federstift	1
515.3102-R035P	Lock nut, Frame	Sicherungsmutter, Rahmen	1
515.3102-R034P	Rubber Cushion	Gummikissen	1
515.3101-R028P	Cylinder	Zylinder	1
515.3101-R029P	Stem, air piston	Ventilstift	1
515.3101-R030P	Piston ring	Kolbenring	1
515.3101-R031P	Lock nut, piston	Sicherungsmutter, Kolben	1
515.3101-R032P	O-ring	O-Ring	1
515.3101-R033P	O-ring	O-Ring	1
515.3101-R034P	Cap, cylinder	Zylinderkappe	1
515.3101-R035P	Spanner gauge	Maulschlüssel mit Messlehre	1
515.3101-R036P	Spanner	Schraubenschlüssel	1
515.3101-R037P	Spring pin, trigger	Splint für Auslöser	1
515.3101-R038P	Spring pin	Federstift	1
515.3101-R039P	Trigger rod	Abzugsstange	1
515.3102-R049P	Trigger	Auslöser	1
515.3102-R051P	Trigger lever	Auslösehebel	1
515.3101-R040P	Spring pin	Federstift	1
515.3101-R041P	O-ring	O-Ring	1
515.3101-R042P	Pusher	Ausstoßer	1
515.3101-R043P	Spring, pusher	Federschieber	1
515.3102-R044P	Valve	Ventil	1
515.3101-R044P	Collar, valve	Ventilring	1
515.3102-R026P	O-ring	O-Ring	1
515.3102-R045P	Spring, valve	Federventil	1
515.3102-R046P	O-ring	O-Ring	1
515.3102-R047P	Cap, valve	Ventilkappe	1